

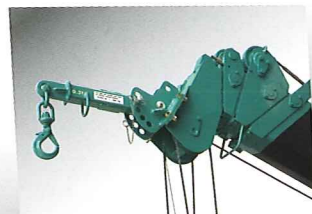
Mini Crawler Crane

# MC285C-2



Slim Body Width : 750mm  
Lifting Capacity : 2.82t x 1.4m  
Programmable Moment Limiter  
Crane/Outrigger Interlock System  
Digital Feedback Remote Control  
4 Fall/2 Fall Hook Block  
Voice Warning System  
Data Logger

## Available with



Searcher Hook



Electric Motor



Moment Limiter



MAEDA



# MAEDA Mini Crawler Crane MC285C-2

## Specifications

| Model   |                                | MC285CRM(E)-2  |
|---|--------------------------------|--|
| Crane capacity                                |                                | 2.82t × 1.4m   |
| Max. working radius                           |                                | 8.205m × 0.15t   |
| Max. lifting height (on the ground)           |                                | 8.7m   |
| Max. lifting height (underground)             |                                | -10.1m (4 falls)   |
| Winch system                                  | Hook speed                     | 9.3m/min (4 layers, 4 falls)   |
|   | Hoist wire rope                | IWRC 6 × Fi (29) 0/0, φ7 × 48.0m   |
| Telescoping system                            | Type                           | Fully automatic 5-section pentagonal telescopic boom (3 to 5 section: Simultaneous telescoping)  |
|   | Boom length                    | 2.535m ~ 8.575m  |
|   | Boom telescoping stroke / time | 6.04m / 22sec  |
| Boom hoist system                             | Hoist angle / time             | 0 to 80deg / 14.0sec   |
| Swing system                                  | swing angle / time             | 360 deg / 1.0rpm   |
| Outrigger system                              | Type                           | 1st stage with flexible stay damper, 2nd stage manual pullout, hydraulic cylinder direct acting type   |
|   | Max. extended width            | (Lateral) 4,580 × (Front) 4,530 × (Rear) 3,810mm   |
| Travel system                                 | Type                           | Hydraulic motor driven, stepless speed changer   |
|   | Travel speed                   | 0 ~ 2.2km/h  |
|   | Gradability                    | 20deg  |
|   | Crawler ground length × width  | 975 × 200mm  |
|   | Ground pressure (MC285CRM-2)   | 49.3kpa [0.497kgf/cm <sup>2</sup> ]  |
|   | Ground pressure (MC285CRME-2)  | 53.3kpa [0.537kgf/cm <sup>2</sup> ]  |
| Engine  | Model                          | YANMAR 2TNV70-NMBA   |
|   | Displacement                   | 0.569L [569cc]   |
|   | Rated output                   | 7.4kw/2,500 min <sup>-1</sup> [10.1ps/2,500rpm]  |
|   | Starting method                | Electric starting  |
|   | Fuel / Fuel tank capacity      | Diesel / 12.0L   |
| Motor (MC285CRME-2)                           | Motor type                     | Totally enclosed fan-cooled motor 5.5kw, 4P 380V   |
|   | Starting system                | Inverter system (30Hz-60Hz)  |
| Remote control system                         | Type                           | Cable remote controller  |
|   | Micro speed mode               | Available  |
|   | Load display for transmitter   | Available  |
|   | Outrigger operation            | Available  |
|   | Voice                          | Available  |
| Overall length × width × height (MC285CRM-2)  |                                | 2,750mm × 750mm × 1,470mm  |
| Overall length × width × height (MC285CRME-2) |                                | 3,320mm × 750mm × 1,470mm  |
| Machine weight                                |                                | 1,960kg (2,120kg with electric motor)  |
| Safety device                                 |                                | Overwind protection, Angle indicator, Hydraulic safety valve, Wire rope latch, Level, Machine body inclination alarm, EMO switch, Moment limiter, Working status lamp, Data logger, Outrigger setting lamp, Crane & Outrigger interlock device |
| Optional equipment                            |                                | White rubber tracks, Single fall hook, Searcher hook   |

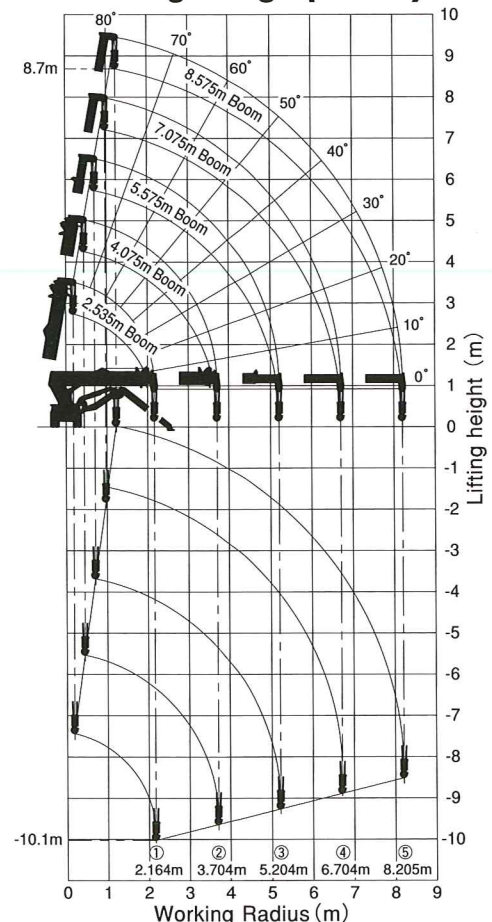
## Rated Total Load Chart (4 falls)

| Rated Total Load Chart with outrigger extended to maximum |                       |                    |                       |                    |                       |                    |                       |
|---|-----------------------|--------------------|-----------------------|--------------------|-----------------------|--------------------|-----------------------|
| 2.535m/4.075m Boom  |                       | 5.575m Boom        |                       | 7.075m Boom        |                       | 8.575m Boom        |                       |
| Working radius (m)  | Rated total load (kg) | Working radius (m) | Rated total load (kg) | Working radius (m) | Rated total load (kg) | Working radius (m) | Rated total load (kg) |
| 1.4 or less   | 2820                  | 3.0 or less        | 1220                  | 3.6 or less        | 820                   | 4.0 or less        | 550                   |
| 1.5   | 2520                  | 3.5                | 970                   | 4.0                | 740                   | 4.5                | 400                   |
| 2.0   | 1920                  | 4.0                | 780                   | 4.5                | 580                   | 5.0                | 340                   |
| 2.5   | 1570                  | 4.5                | 630                   | 5.0                | 480                   | 5.5                | 300                   |
| 3.0   | 1220                  | 5.0                | 530                   | 5.5                | 430                   | 6.0                | 270                   |
| 3.5   | 970                   | 5.205              | 530                   | 6.0                | 380                   | 6.5                | 230                   |
| 3.705   | 920                   |                    |                       | 6.5                | 350                   | 7.0                | 200                   |
|   |                       |                    |                       | 6.705              | 330                   | 7.5                | 180                   |
|   |                       |                    |                       |                    |                       | 8.0                | 150                   |
|   |                       |                    |                       |                    |                       | 8.205              | 150                   |

| Rated Total Load Chart with outrigger extended to other than maximum |                       |                    |                       |                    |                       |                    |                       |
|--|-----------------------|--------------------|-----------------------|--------------------|-----------------------|--------------------|-----------------------|
| 2.535m/4.075m Boom   |                       | 5.575m Boom        |                       | 7.075m Boom        |                       | 8.575m Boom        |                       |
| Working radius (m)   | Rated total load (kg) | Working radius (m) | Rated total load (kg) | Working radius (m) | Rated total load (kg) | Working radius (m) | Rated total load (kg) |
| 1.5 or less  | 1720                  | 3.0 or less        | 510                   | 3.6 or less        | 400                   | 4.0 or less        | 330                   |
| 2.0  | 1070                  | 3.5                | 390                   | 4.0                | 330                   | 4.5                | 280                   |
| 2.5  | 630                   | 4.0                | 310                   | 4.5                | 270                   | 5.0                | 230                   |
| 3.0  | 490                   | 4.5                | 270                   | 5.0                | 220                   | 5.5                | 180                   |
| 3.5  | 370                   | 5.0                | 190                   | 5.5                | 180                   | 6.0                | 160                   |
| 3.705  | 330                   | 5.205              | 190                   | 6.0                | 150                   | 6.5                | 130                   |
|  |                       |                    |                       | 6.5                | 120                   | 7.0                | 100                   |
|  |                       |                    |                       | 6.705              | 120                   | 7.5                | 80                    |
|  |                       |                    |                       |                    |                       | 8.0                | 70                    |
|  |                       |                    |                       |                    |                       | 8.205              | 60                    |

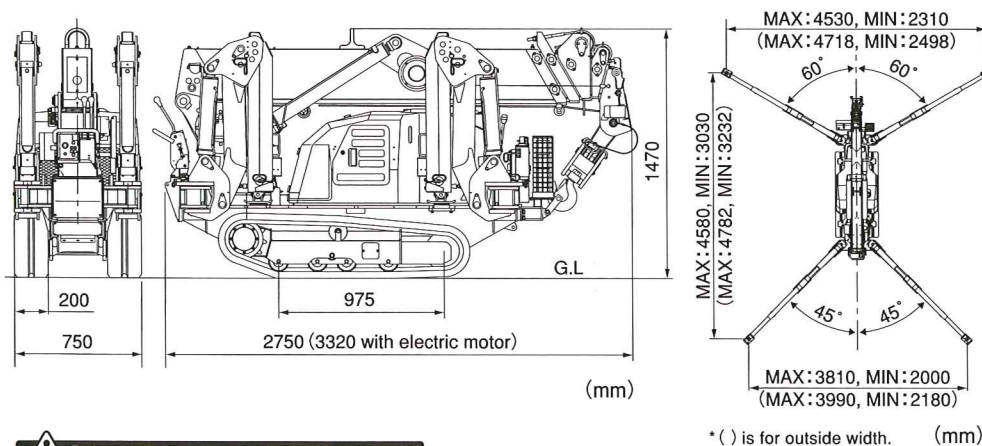
\* The Rated Total Load Chart is based on actual working radius including boom deflection.  
 \* The weight of hook block (standard 4 fall / 2 fall-30kg) must be included as part of the load shown in the Rated Total Load Chart.  
 \* When using two falls hook or single fall hook, use the appropriate four falls Rated Total Load Chart shown above but with a maximum load of: -1410kg for two falls and -710kg for Single fall.

## Working Range (4 falls)



\* The Working Range Chart does not take into account boom deflection under load.

## Dimensions



\* ( ) is for outside width. (mm)

**Before use, please read the Operation Manual**

Due to improvements, the specifications are subject to change without notice.



## MAEDA SEISAKUSHO CO.,LTD.

No.1095,Onbegawa,Shinonoi,Nagano-City,Nagano-Pref.388-8522 Japan  
 Head office TEL : 026-292-2228 FAX : 026-293-8499  
 URL : <http://www.maesei.co.jp/> E-mail : [maedasp@maesei.co.jp](mailto:maedasp@maesei.co.jp)